



match-trade  
technologies

# Bridge MT4/MT5 with RMS

Bridge Manager

LOGOUT

DASHBOARD

ADMIN DASHBOARD

USERS

LOGS

REPORTS

BRIDGES

MARKET DEPTH

MARKET WATCH

STATISTICS

HEDGE MONITOR

BRIDGE DETAILS

STATUS

LP SESSIONS

BROKER SESSIONS

BRIDGE SYMBOLS

LP SYMBOLS

RISK MANAGEMENT

RECENT LOGS

SEARCH LOGS

HEDGE ERROR LOGS

AUTO HEDGE LOGS

MT4\_TEST

REFRESH

DOWNLOAD

UPLOAD

ADD SYMBOL

RESTART SESSION

Symbols	Alias	Bid	Ask	Multiplied
0001.HK	0001.HK			
0002.HK	0002.HK			
0003.HK	0003.HK			
0004.HK	0004.HK			
0006.HK	0006.HK			
0011.HK	0011.HK			
0012.HK	0012.HK			
0016.HK	0016.HK			

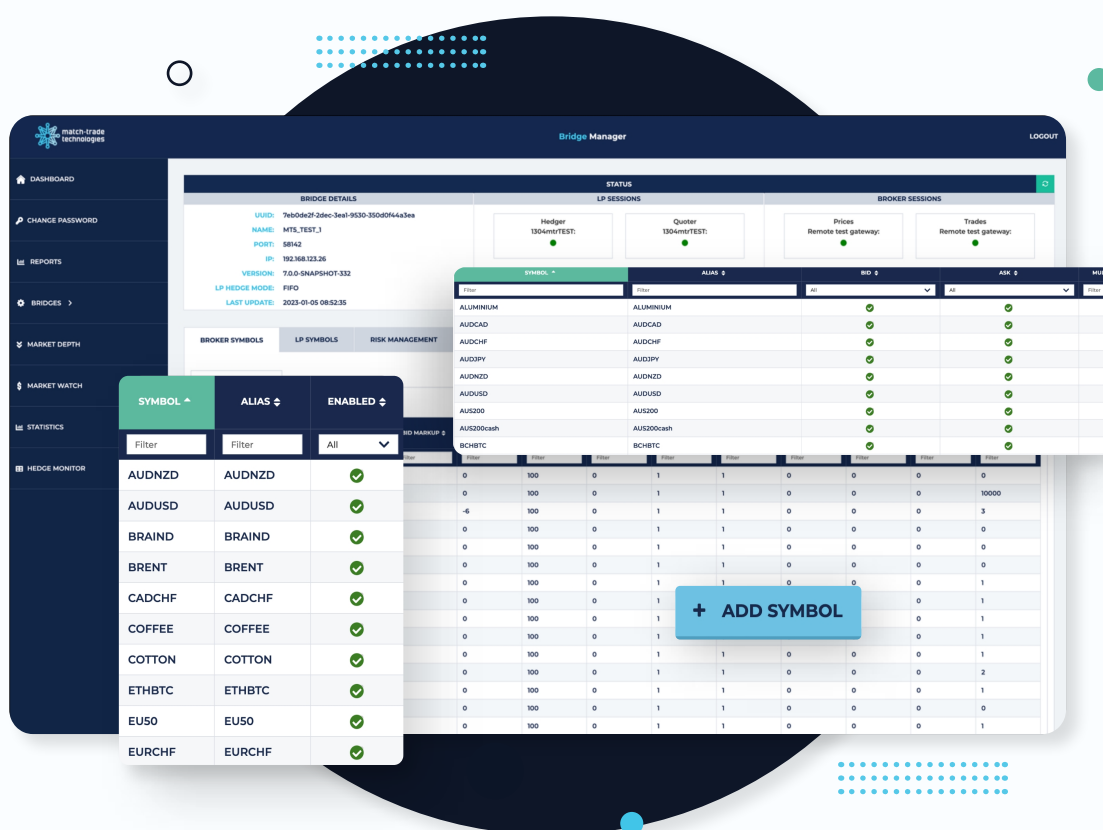
Advanced Bridging and Trade Processing  
technology for A-Book and B-Book

# Match-Trade's Bridge

## MT4/MT5 with Risk Management System

Match-Trade processing & bridging technology provides a very competitive and complete solution for all types of brokers. One piece of software, that

can work seamlessly with many Liquidity Providers, so we can give you complete flexibility in directly connecting to your desired liquidity pools.



## What is inside our offer:

- MT4/MT5 Bridge Technology & Liquidity Aggregator
- Web-based Bridge Manager Application
- Risk management algorithms configuration
- Various B-Book execution modes
- Statistics & Hedge Monitor inside the platform
- Rules scheduler to change symbol parameters within a specific time
- Market watch to check your price validity
- Market depth to check your incoming and outgoing streams
- Advanced reporting to check profitability of your trades
- Fast setup, no further MT4/ MT5 plugins needed
- 24/7 Technical Support from our experts
- Auto hedge and adjust positions options

# Tailored to your needs

## Design for Brokers of all size



### Multiple LP connections & aggregation

Our advanced bridging solution provides a broad range of connections to well-known LPs. Using our bridge, Brokers can aggregate multiple price streams and manage hedge settings in real-time without restarting servers or editing client groups.



### Customizable risk management

Bridge by Match-Trade allows brokers to customise risk management settings at the account or group level (routing rules, coverage rules etc.). Additional execution parameters protect the broker from adverse trading conditions.



### No MT4/MT5 plugins needed

Our bridge connects to MT4 or MT5 Server via Manager API or Gateway API, allowing brokers to reduce the number of market-making plugins on the server and eliminate risks associated with having multiple competing plugins running simultaneously.



### Managing data feeds and execution

Technology allows Brokers to manage data feeds for their MT4/MT5 servers easily. Prices aggregation, VWAP execution, min/max spreads, price improvement rules and other options allow brokers to protect themselves from scalpers and toxic flow.



### Advanced reporting capabilities

Together with the bridge, we provide a reporting module where you can generate detailed reports for all trades processed by the bridge. We also provide profitability reports and a-book simulation reports for better control over the business.



### Easy configuration

Gain full control over our bridge thanks to its modern, intuitive interface. You can edit markups, instrument prices, orderbook depth, minimal and maximal spreads, execution delays, and more, adapting the entire tool exactly to your needs.



# Already integrated

## Liquidity Providers

**With the Match-Trade Technologies Bridge, you can effortlessly connect with a range of market leaders.**

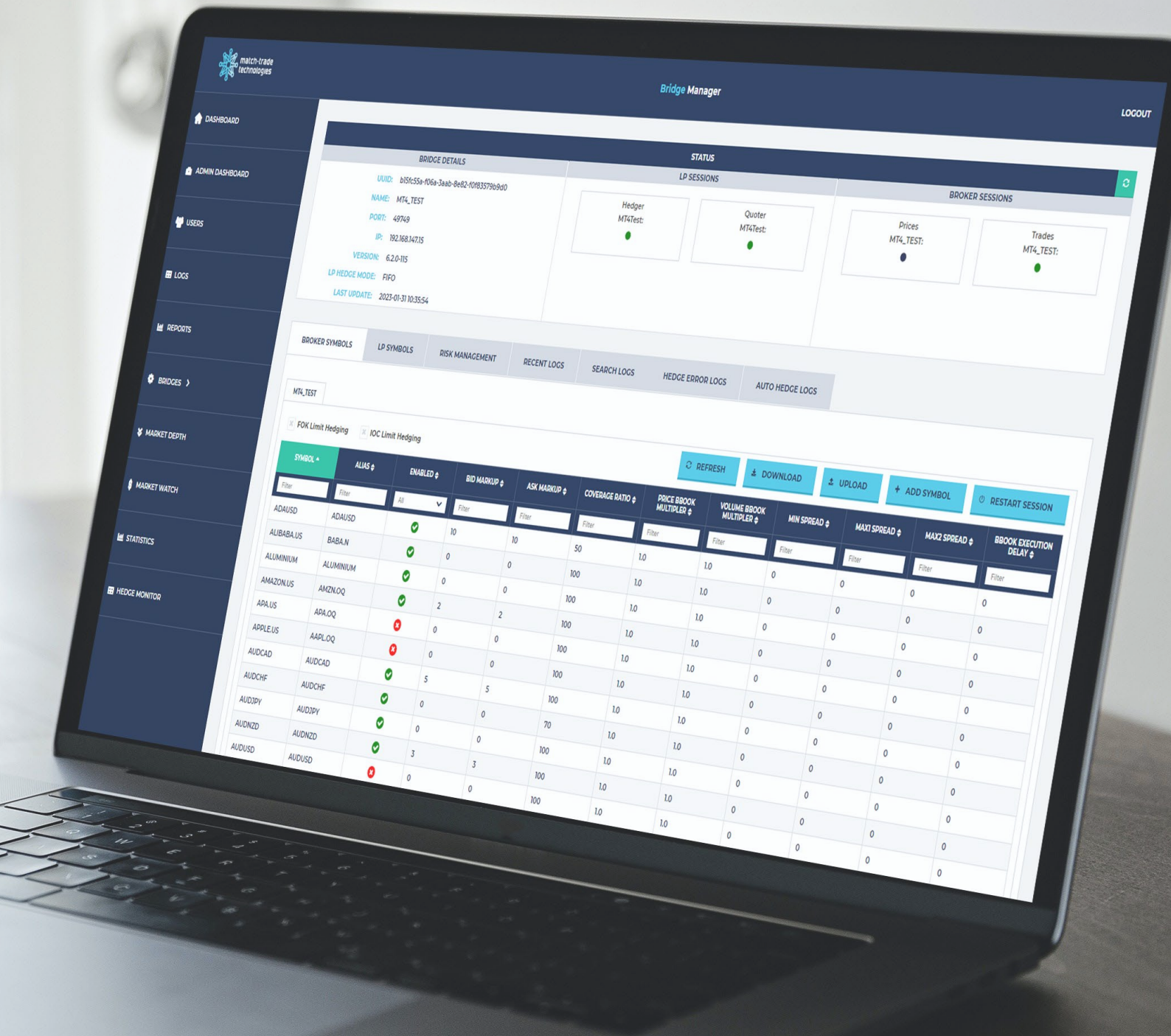
A broad range of integrated liquidity providers allows clients to select the most appropriate solution tailored to their company's requirements.

It enables brokers to not only choose the provider that offers the most advantageous deal but also to curate an instrument offering best suited to their clients' needs.



all LPs who use





# Bridge Manager

## Connecting your Liquidity Provider

### Configure and monitor all the bridge parameters

Web-based Bridge Manager allows managing key settings, including the aggregation of multiple LPs with routing algorithms. The Broker can switch on/off a particular LP or just the bid or ask prices (one by one). Also, Broker or LP sessions can be restarted here.

### Change the key settings of the bridges

The section contains information about selected bridges, including the current version, the status of LP connections and Broker's sessions. You can also check the logs of all Bridges assigned to your user with a simple and user-friendly interface.

### Quotation monitor of particular instruments

To make monitoring market data more beneficial for Brokers, our Market Watch gives them the ability to view and set the refresh time interval for each instrument. This feature allows checking if there are any feed interruptions and immediately react to solve the problem.

### Hedge Monitor: control your total exposure

Control your hedged exposure on MT4 / MT5 versus the Liquidity Provider's accounts and B-Book exposure - all available in one place. Enable the auto-hedge option not to be bothered about adjusting position when you move clients with open positions.

### Use insights from A-Book profitability reports

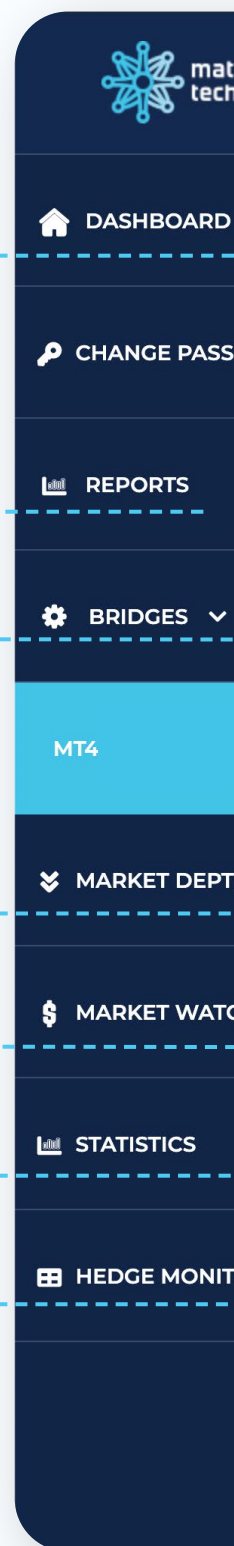
Integrated web reporting module with profitability reports and A-Book simulation provides daily control over your market risk. Increase the efficiency of managing your Broker's order flow with real-time wide reports. Pentaho reports are already built into the Bridge Manager.

### Check market depth for particular instruments

A separate module allows the Broker to check the market depth for each of their trading instruments. In addition, the Broker may check whether the Bridge receives quotations from a Liquidity Provider and whether they are sent to the platform without any delay.

### Check your Brokerage Business statistics

Take advantage of the full range of statistics to help you run your business and increase its profitability. Check the number of trades, see which instruments are the most popular, verify the turnover, and much more!





WORD

H

CH

OR

STATUS	
BRIDGE DETAILS	LP SESSIONS
<div><div>UUID:</div><div>b15fc55a-f06a-3aab-8e82-f0f83579b9d0</div></div> <div><div>NAME:</div><div>MT4</div></div> <div><div>PORT:</div><div>52151</div></div> <div><div>IP:</div><div>192.168.147.15</div></div> <div><div>VERSION:</div><div>7.0.3-127</div></div> <div><div>LP HEDGE MODE:</div><div>FIFO</div></div> <div><div>LAST UPDATE:</div><div>2023-04-20 01:09:26</div></div>	<div><div>Hedger</div><div>MT4</div><div></div></div>

BROKER SYMBOLS	LP SYMBOLS	RISK MANAGEMENT	RECENT LOGS	SEARCH L
----------------	------------	-----------------	-------------	----------

MT4\_TEST

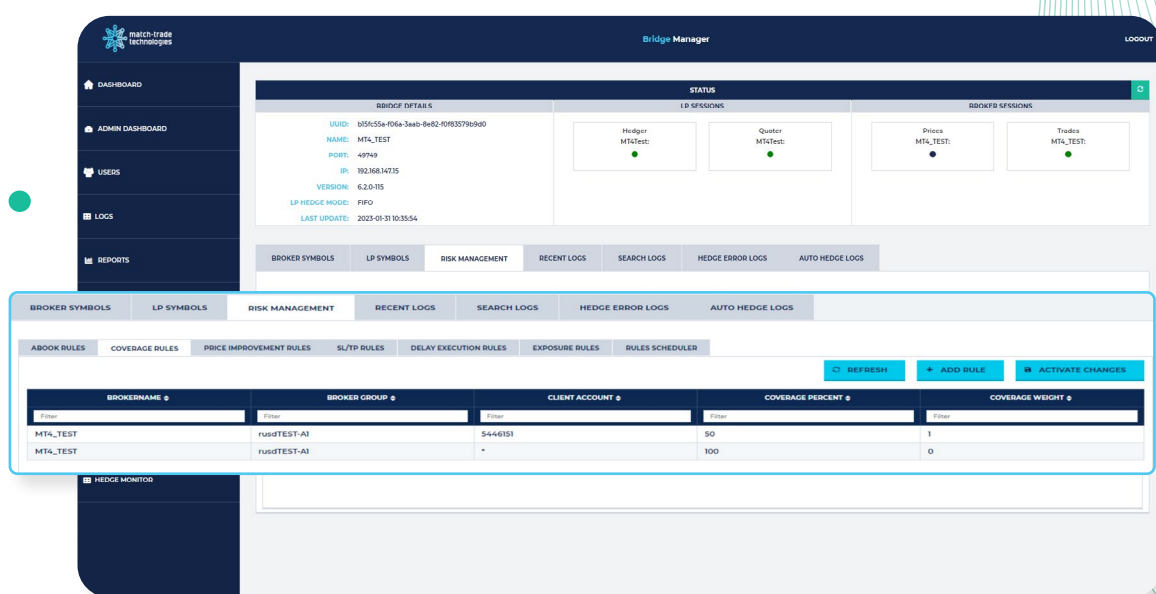
☐ FOK Limit Hedging:

SYMBOL ^	ALIAS ^	ENABLED ^	BID MARKUP ^	ASK MARKUP ^	COVERAGE RATIO ^	PRICE MULTIP
Filter	Filter	All		Filter	Filter	Filter
ADAUSD	ADAUSD	✓	0.0000	0.0000	100	1.
ALUMINIUM	ALUMINIUM	✗	0	0	100	1.
AUDCAD	AUDCAD	✓	0.00000	0.00000	100	1.
AUDCHF	AUDCHF	✓	0.00000	0.00000	100	1.
AUDJPY	AUDJPY	✓	0.000	0.000	100	1.
AUDNZD	AUDNZD	✓	0.00000	0.00000	100	1.
AUDUSD	AUDUSD	✓	0.00000	0.00000	100	1.
AUS200	AUS200	✗	0	0	100	1.

# Risk Management System & Statistics Dashboard

Control your hedged exposure on MT4/MT5 versus LP accounts and B-Book exposure in one place. Set conditions for A-Book rules, coverage rules, price improvement rules, coverage rules, price improvement rules,

SL/TP rules, and delay execution. Enable the auto-hedge option, and don't bother about adjusting position if you move clients with open positions.



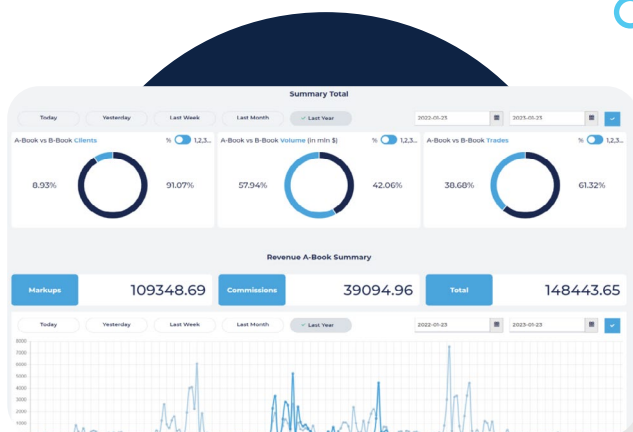
## The dashboard shows:

Number of trades, comparison between A-Book vs B-Book

Number of trades on A-Book and B-Book

Client Allocation Trends, comparison of A-Book vs B-Book

Revenue A-Book Summary



Number of customers, comparison of A-Book vs B-Book

Trading volume, comparing A-Book vs B-Book

Volume Trends, comparison of A-Book vs B-Book

A-Book Revenue per million



# Hedge Settings & Monitor available for Brokers

The MT4 / MT5 Bridge from Match-Trade Technologies with a flexible routing system allows brokers to hedge client trades with a liquidity provider. For A-Book trades, the

Broker can set which group will be hedged. Our flexible hedging system allows setting a particular account, instrument or percentages of trades that should be hedged.

**Hedge monitor** Lots ☐ Units

BROKER NAME	TIME OF OCCURRENCE	DIFFERENCE
MT4_Test_Bridge_minus5 [FIFO]		0
AUDNZD	12/02/2023, 04:32:58	1
BTCUSD	12/02/2023, 04:32:58	0
EURUSD	12/02/2023, 04:32:58	-1

## Functions available:

### Adjust position

Manually adjust your position on hedge account directly from bridge manager

### Auto-hedge

Automatically adjust exposition between A-Book / B-Book, after client execution type change

### Hedge

You can hedge exposure on particular instrument by clicking hedge button in B-Book table



## MATCH-TRADE TECHNOLOGIES LLC

**Address:** 2372 Morse Avenue, Irvine, CA 92614 United States

**Phone:** +1 949 407 7046

**Email:** [contact@match-trade.com](mailto:contact@match-trade.com)

**Skype:** match-trade

**Telegram:** MatchTrade

**WeChat:** Match-Trade

## BUSINESS OPERATIONS OFFICE

**Address:** Królewska 18, 5th floor, 00-103 Warsaw Poland

**Email:** [contact@match-trade.com](mailto:contact@match-trade.com)

**WhatsApp:** +48 509 122 642

## SUPPORT OFFICE IN KOREA

**Address:** 17, 160-gil, Yeongdongdae-ro, Geyongjin Bldg 6th Floor, Gangnam-gu, Seoul, Korea

**Phone:** +82-02-541-7400

**Email:** [skwon@match-trade.com](mailto:skwon@match-trade.com)

**Skype:** stevekwon64

## CYPRUS OFFICE

**Address:** Agiou Athanasiou 10, Ksenos Building, Office 101 4105 Limassol, Cyprus

**Email:** [cypus@match-trade.com](mailto:cypus@match-trade.com)

## SUPPORT OFFICE IN INDIA

**Address:** No.150/1, Infantry Road, Bengaluru, 560001, Karnataka, India

**Phone:** +91 9692 808 809

**Email:** [india@match-trade.com](mailto:india@match-trade.com)

**Skype:** India Match-Trade

**WhatsApp:** +91 9692 808 809

## SUPPORT OFFICE IN MALAYSIA

**Address:** L-07-01, Level 7, Block L Solaris Mont Kiara No.2, Kuala Lumpur

**Phone:** +6 016 786 6000

**Email:** [nizwan@match-trade.com](mailto:nizwan@match-trade.com)

**Skype:** nizwanshah

**WhatsApp:** +6 016 786 6000



**match-trade  
technologies**

MATCH-TRADE TECHNOLOGIES IS CONSTANTLY EXPANDING THE GLOBAL TEAM. CONTACT US TO BECOME A BUSINESS PARTNER.